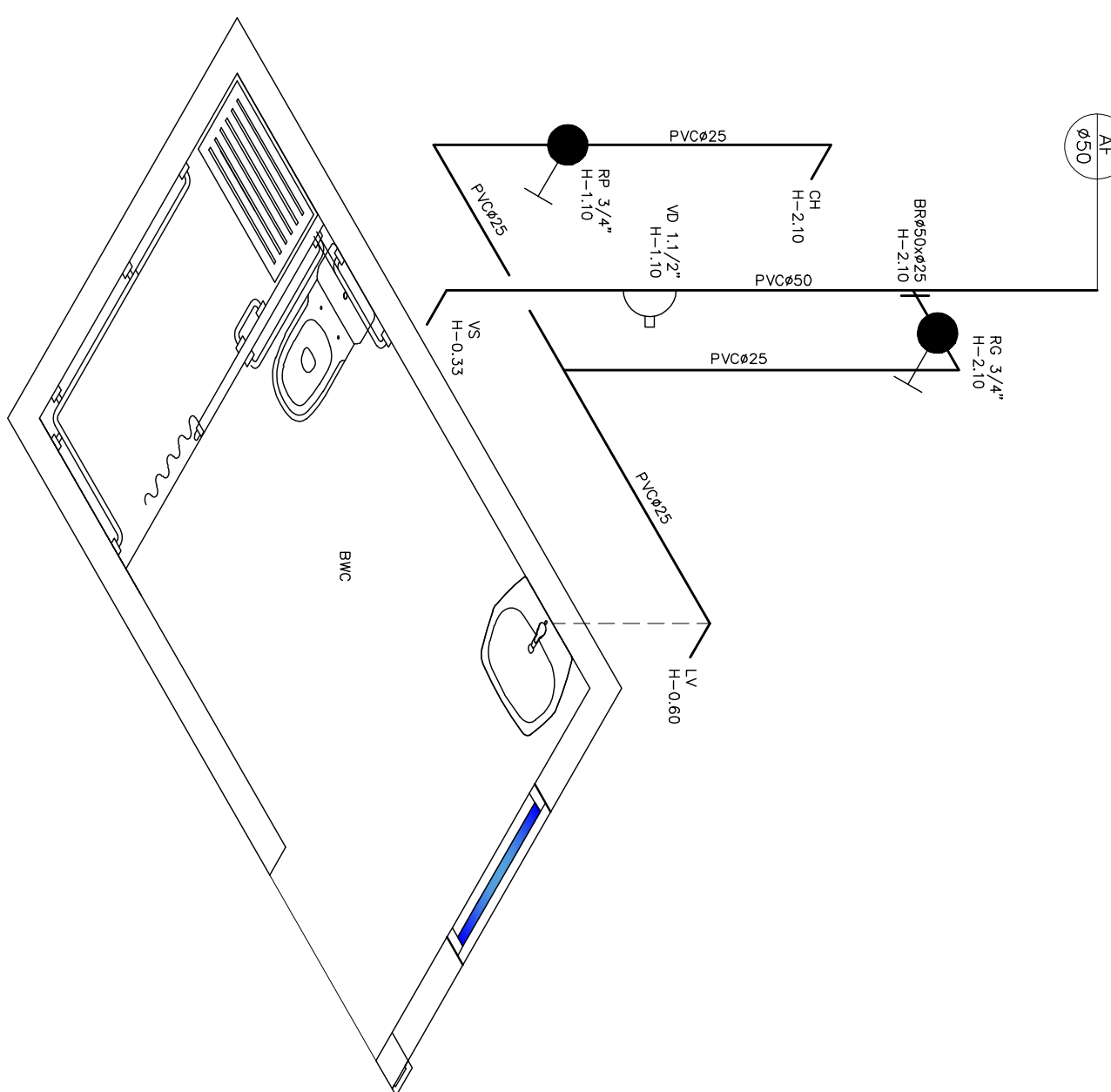
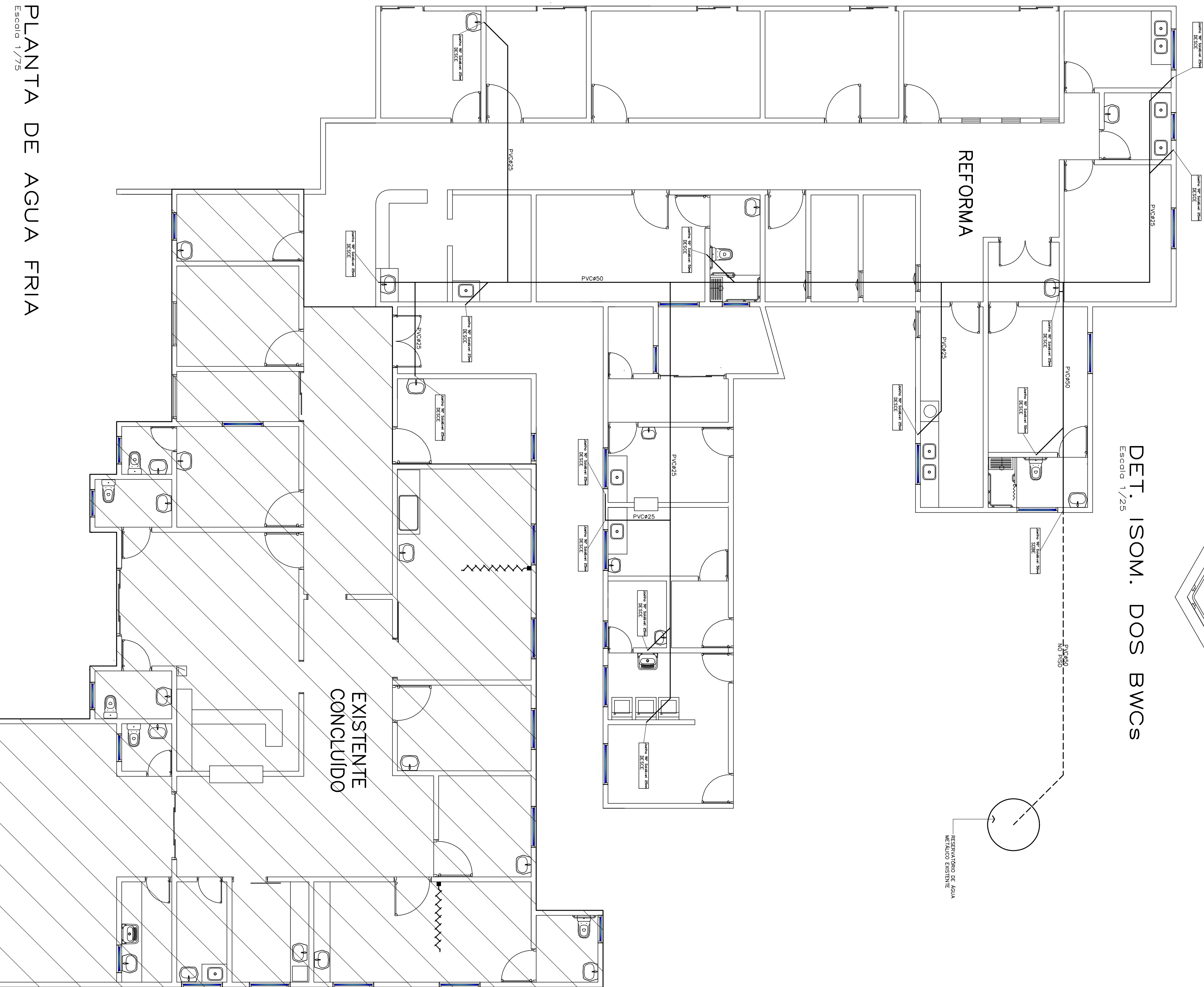


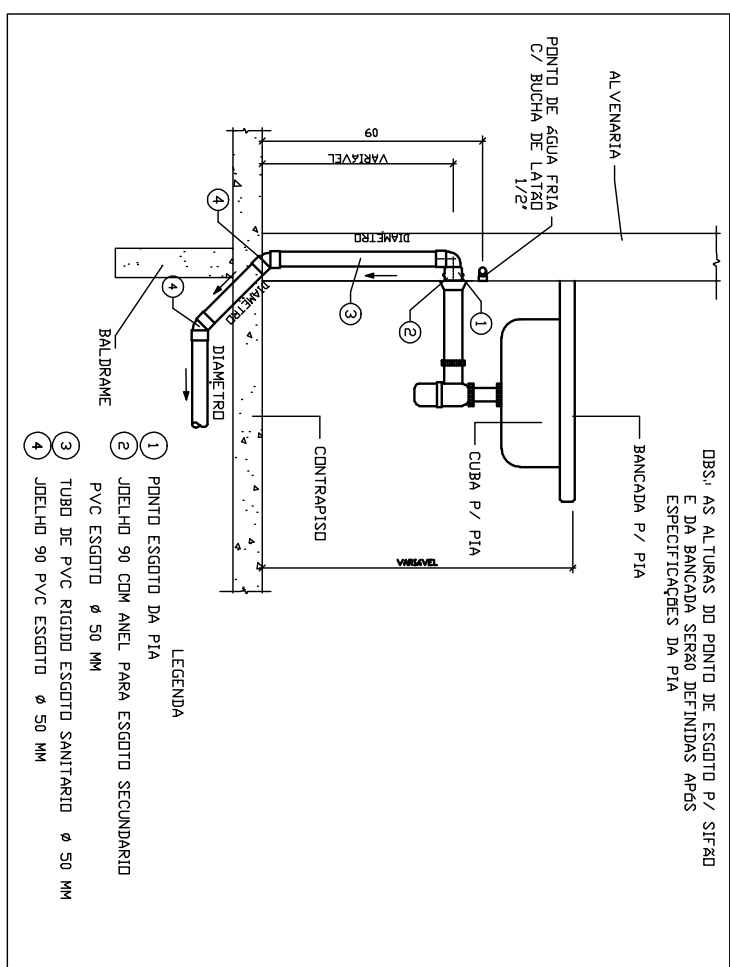
DET. ISOM. LAVATÓRIOS
Escala 1/25



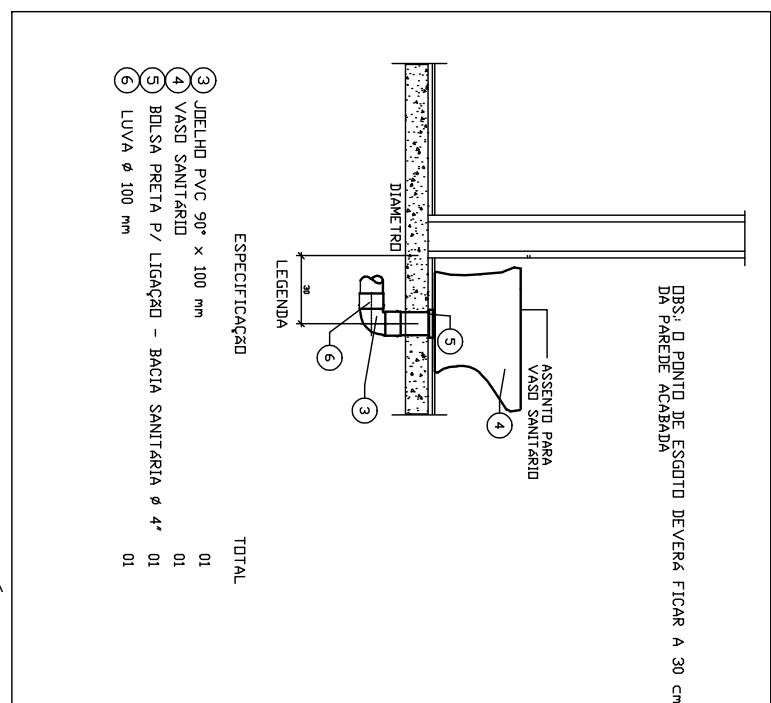
DET. ISOM. DOS BWCs
Escala 1/25



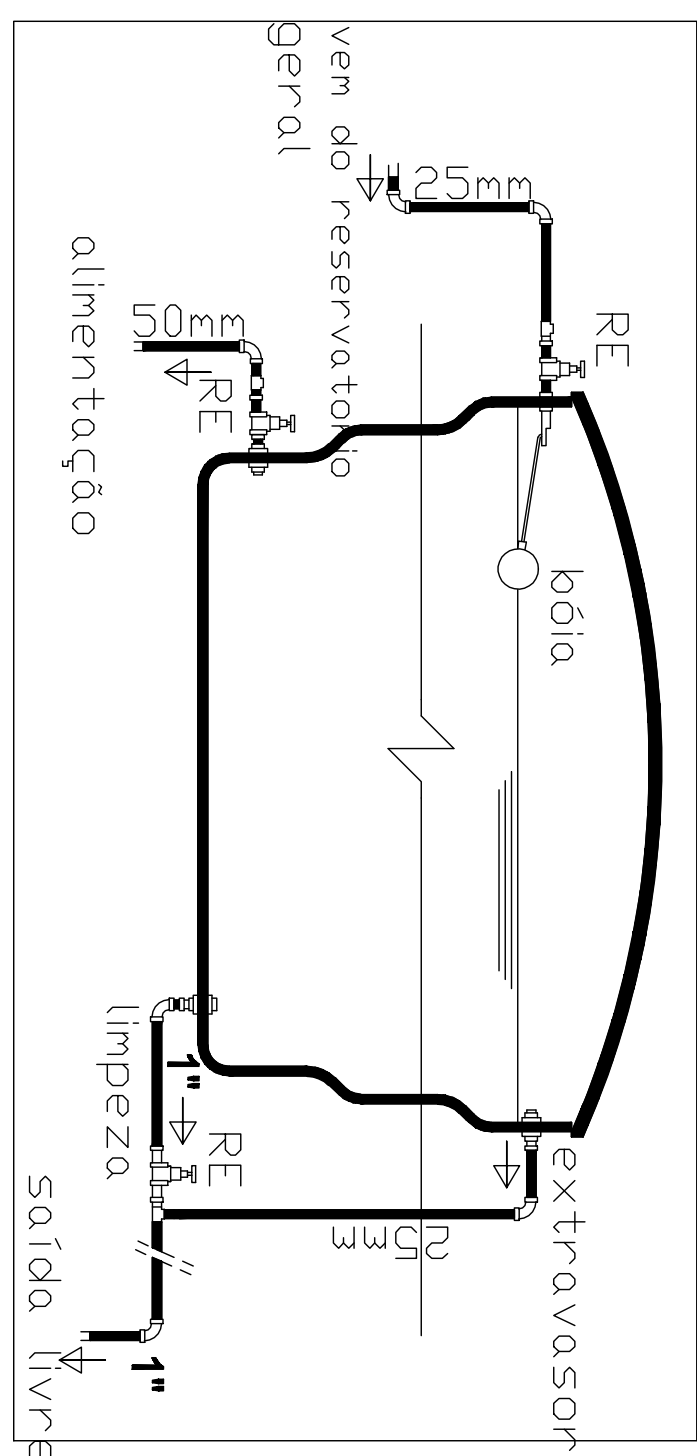
PLANTA DE AGUA FRIA
Escala 1/25



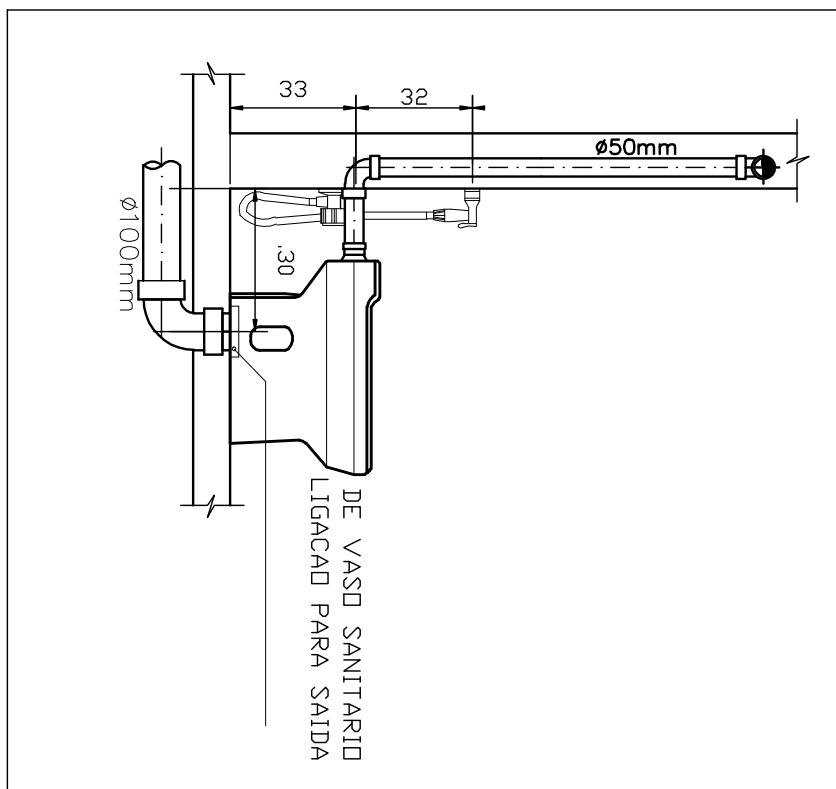
DETALHES PIA DE COZINHA
S/ESCALA



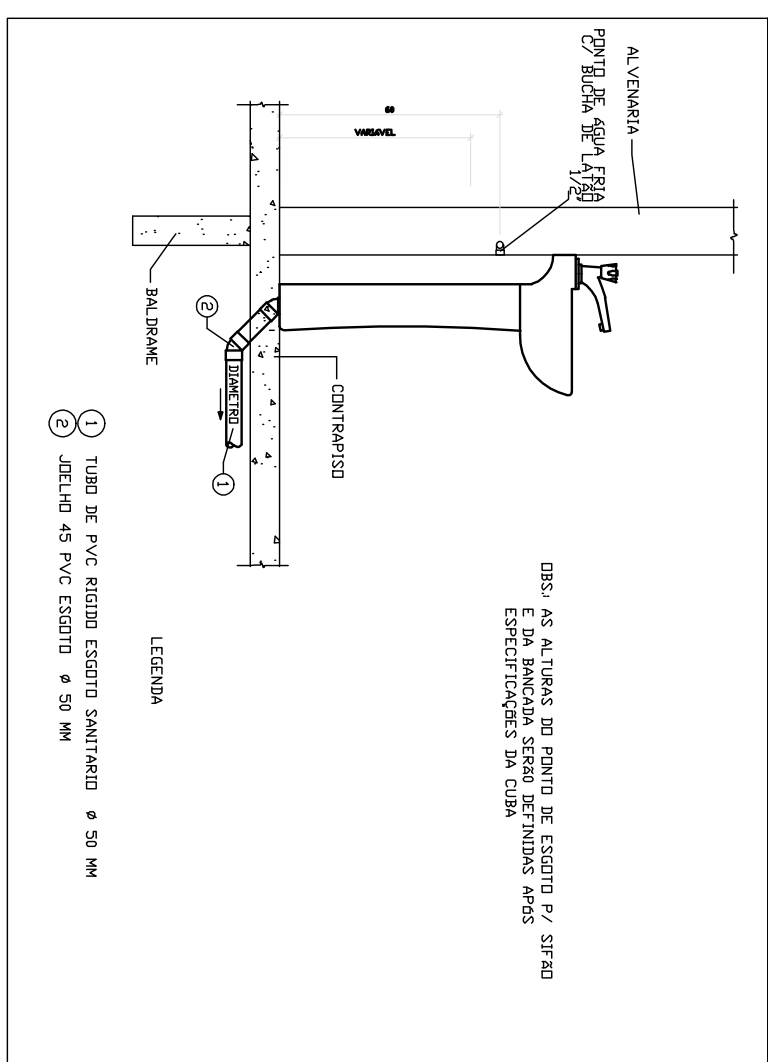
DETALHES VASO SANITÁRIO
S/ESCALA



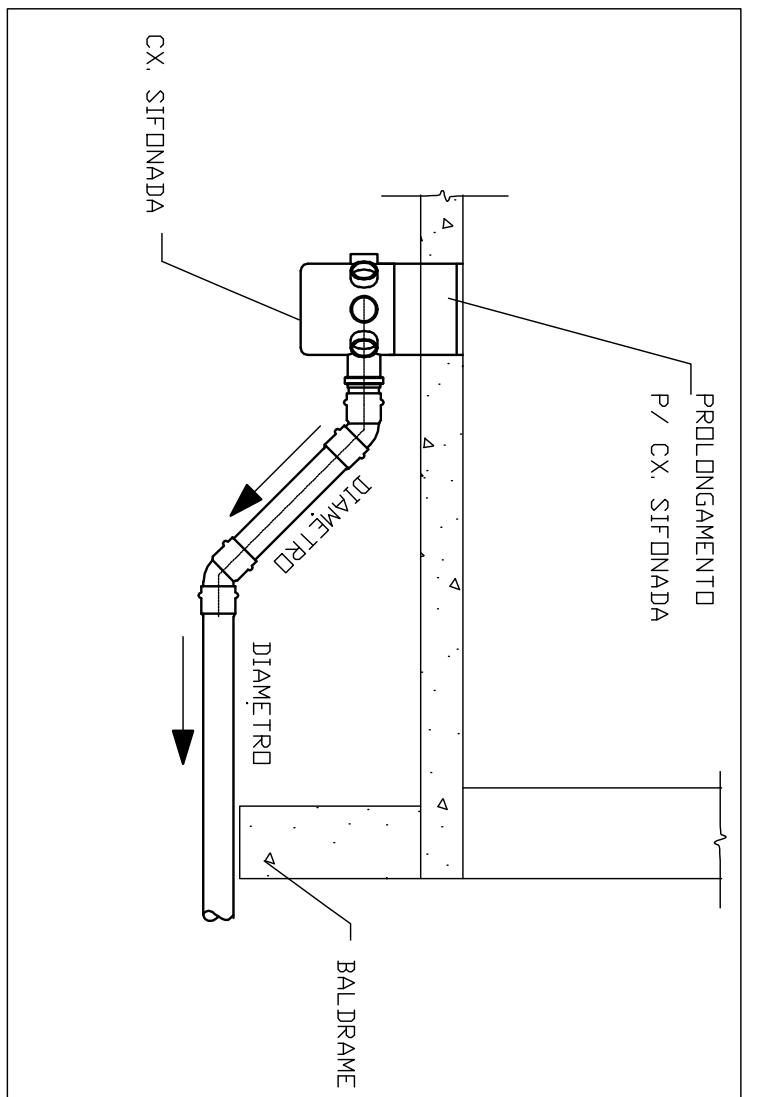
Detalhe de ligações do reservatório
S/ESCALA



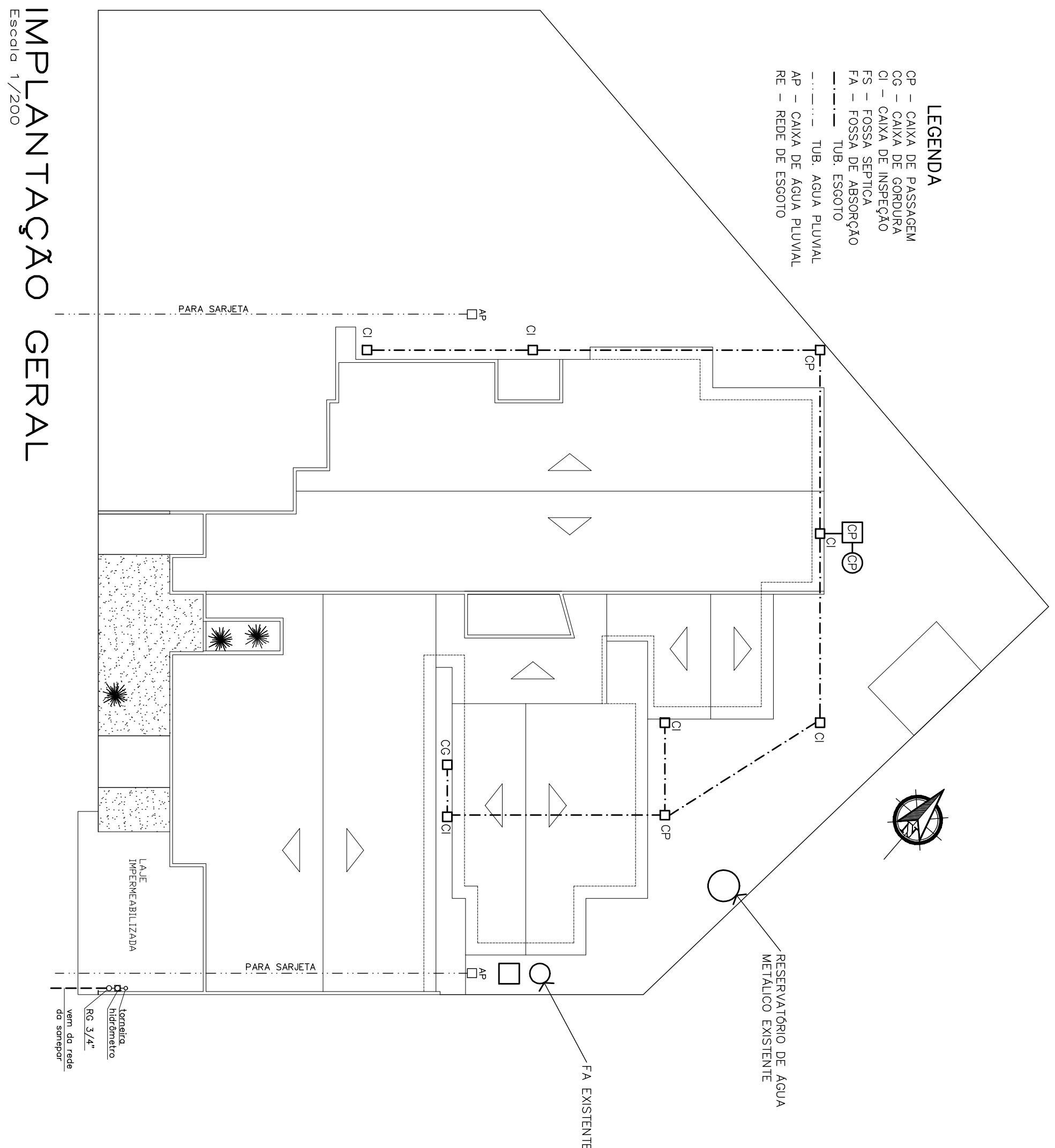
DET. DO VASO.
S/ESCALA



DETALHES DO LAVATÓRIO
S/ESCALA

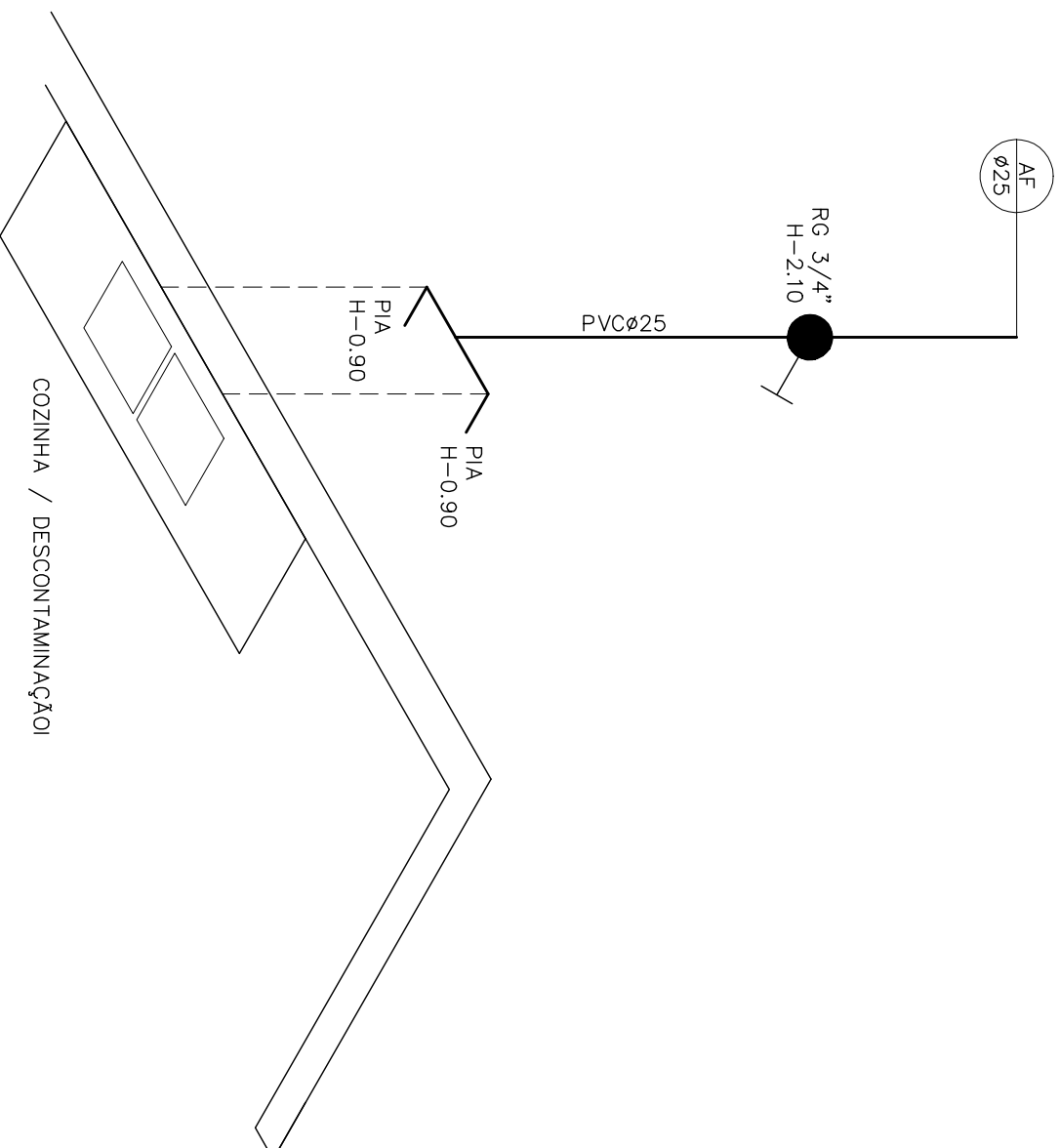


DET. CAIXA SIFONADA
(DESVO BALDRAME)
S/ESCALA



IMPLANTAÇÃO GERAL
Escala 1/200

LEGENDA
GP - CANA DE PASSAGEM
CO - CANA DE INSERÇÃO
CA - CANA DE ASPIRAÇÃO
FA - FOSSE DE ASPIRAÇÃO
TUB. ESOTO
TUB. AGUA PLUVIAL
AP - CANA DE AGUA PLUVIAL
RE - RESERVAÇÃO EXISTENTE



DET. ISOM. PIAS
Escala 1/25

HOSPITAL MUNICIPAL DE INDIANÓPOLIS (REFORMA)

PROJETO HIDRO-SANITÁRIO

Projeto: **LUIZ HERRERA**
Autor: **LUIZ HERRERA**
Assistente: **LUIZ HERRERA**

MUNICÍPIO DE INDIANÓPOLIS

AV. SANTOS DUMONT / AV. JUTAI
LOTES 09,10,11 QUADRA 106 INDIANÓPOLIS / PR

RESO. TÉCNICO: **LUIZ ANTONIO FELIZZI HERRERA CALIBR - A25905-5**

PROJETO HIDRO-SANITÁRIO DE REFORMA

Planta e detalhes de água fria / esgoto

PROJETO: **HS-02**